



Muskingum Soil & Water Conservation District

"Your Soil and Water Conservation Specialists"

225 Underwood Street, Suite 100, Zanesville OH 43701

Phone (740)454-2027

FAX (740)454-1451

Newsletter Issue 2

muskingumswcd.org

Spring 2022, Published Quarterly

Road Trip!

The Muskingum SWCD is taking a three-day, two-night bus trip to the Chesapeake Bay Watershed in Pennsylvania and Maryland and you're invited! The trip will be July 12-14, 2022. Through a generous grant from The Straker Foundation, the cost will be reduced for Muskingum County residents.

Trip Highlights:

- Hoover Family Farm, Perry County, PA - a 750 sow farrow to finish operation
- Harvest View Barn - meet Jim Hershey and the PA No-till Alliance
- Harborview Farms, Rock Hall, Maryland - a 13,000 acre farm on the bay
- A possible boat trip on the bay
- Stroud Research Center - freshwater research since 1967
- The Rodale Institute - organic versus traditional production plot 30-year study

For more information, check out the full-length article inside.
And a huge **THANK YOU** to The Straker Foundation for making this trip possible!



Check out page 3!



#5 Minute Nature Challenge

Spring is a time of color after a sometimes dull winter. Muskingum SWCD will continue the #5minutenaturechallenge to get you outside to enjoy the colors of nature.

- April- Tree buds
- May- Flowers
- June- Pollinators and pollinator plants



You can submit your photos to our Facebook page, <https://www.facebook.com/MuskingumSWCD>, Twitter <https://twitter.com/home> or post to Instagram using #5mintuenaturechallenge. Once you submit your photos, you will be entered into the quarterly drawing for an insulated water bottle.

WE WOULD LIKE TO THANK OUR SPONSORS



**GUERNSEY-MUSKINGUM
ELECTRIC COOPERATIVE, INC.**
Your Touchstone Energy® Cooperative

800-521-9879
www.gmenergy.com



Richard Teisinger, Owner
740-787-1260
Cell Phone: (740)819-1724
rwt@teisinger.com

Residential/Commercial
Track Hoes Dump Trucks Skid Steer
Backhoe Dozers

Basements ★ Driveways ★ Springs
Sewer & Septic Systems ★ Drainage Work

HOPEWELL, OHIO
10255 West Pike Hopewell, Ohio 43746

We give
**FARMERS
CREDIT.**

We help rural residents
build, farms grow and
businesses expand.



8971 Whitaker Road, Cambridge, OH 43725
(888)713-7293

**Need Insurance?
CALL
740-450-0001
Lee A. Brown**

1696 East Pike
Zanesville, Ohio 43701
Email: brownl11@nationwide.com

Alan H. Wilson
Realtor
For The Service You Deserve

We sell it ALL
Phone # 740-607-4750
alwilsonrealtor@gmail.com
www.al-wilson.com



2406 Maple Ave.
Zanesville, Ohio 43701



Millersport Agri Service

The Hoover Family
Agricultural Equipment ♦ Grain Storage
Handling & Drying Systems
10221 Lancaster, Newark Rd., Millersport, OH 43046
www.millersportagriservice.com **(740)467-2424**



The Community Bank
Member FDIC
740.454.1600
TheComBank.com




Park
NATIONAL BANK



Muskingum Soil and Water
Conservation District



MuskingumSWCD



MSWCD



Muskingum_SWCD



muskingumswcd

The SWCD and NRCS prohibit discrimination in any program activity or employment on the basis of race, color, national origin, sex, religion, age, disability, retaliation, political beliefs, sexual orientation, marital or family status, or genetic information. Persons with disabilities who require alternative means of communication (Braille, large print, etc.) or who need special accommodations for meetings should contact the SWCD office at (740) 454-2027.

Road Trip!

The Muskingum Soil and Water Conservation District is going on a trip...a bus trip! Join us for a three-day, two-night trip to the Chesapeake Bay Watershed in Pennsylvania and Maryland. We are heading east on July 12, 2022 and will return on July 14, 2022. This trip will be an educational experience focusing on water quality.

Ohio has water quality issues just like most other states. Most of the focus on water quality in Ohio has been toward Lake Erie or Grand Lake St. Mary's. The rest of the State of Ohio hasn't seen the same scrutiny as those two watersheds. But mark my words, our day is coming! The watersheds in our part of the state do not flow to Lake Erie; they flow to the Gulf of Mexico. The Gulf of Mexico has its own set of problems. For instance, there is a dead zone in the gulf the size of the State of Delaware. Talk about a HUGE problem. We can't see the Gulf of Mexico from our front porch, but nutrients from our fields might be adding to the problem if we do not manage those nutrients correctly. Based on 2017 ag census data and 2018 information from the Ohio EPA, if you divide the estimated Nitrogen loss from the Muskingum River Watershed by the number of acres of corn planted in the watershed it equals over 90 pounds. Nitrogen is used on more than just corn acres, but this gives us a picture of the amount of nutrients that might be lost from our fields.

Water quality issues are normally followed by regulations. When you want to know how to deal with a situation or how to fix something, you go to someone who has been there and done that. Agriculture in the Chesapeake Bay Watershed has dealt with regulation for close to 50 years. We are going to visit and talk with producers and organizations in the Chesapeake Bay Watershed to see what their experiences have been dealing with regulation and the changes they have made to their operations.

We will start out on Tuesday visiting with the Hoover family in Perry County, PA. They have a 750-sow farrow to finish operation that utilizes cover crops, no-till, forages to reduce high P soil levels and some unique equipment. We will then travel to the Harvest View Barn <https://harvestviewbarn.com/> for a meal and meeting with Jim Hershey and the PA No-till Alliance <https://panotill.org/> to hear what they are doing to help the water quality in the bay.

Wednesday we will go further east across the Bay Bridge to Harborview Farms <https://www.harborviewfarms.net/> near Rock Hall, Maryland. They farm 13,000 acres on and near the bay. They utilize cover crops, no-till, solar and nutrient management to address water quality. We are hoping to get a boat trip out on the bay also on Wednesday.

On Thursday morning we will visit the Stroud Water Research Center <https://stroudcenter.org/>. They are an organization doing research and education on freshwater since 1967. Our final stop will be the Rodale Institute <https://rodaleinstitute.org/>. The Rodale Institute does work in organic production. We will be viewing a 30-year organic versus traditional production plot, an outdoor swine operation and some of their water quality work.

This will be a great opportunity to learn from other producers and organizations. We are still working out some of the details for the trip. We received a grant from the Straker Foundation to reduce the cost of the trip for Muskingum County Residents. If you are interested in going with us on this trip contact the office at 740-454-2027 and keep checking our website <http://muskingumswcd.org> for costs when it becomes available and updates on the trip.



Muskingum SWCD Shop

Thistle Bird Feeder



\$41.96

Hanging Bird Feeder with Two Stainless Steel Suet Holders



**With suet \$42.89
Without suet \$37.30**

Sunflower Bird Feeder



\$25.17

Wood Duck Nest Box



\$72.73

Three Chamber Bat Box



\$47.55

Bluebird Nest Box



\$22.38

Slanted Bluebird Nest Box with Vents



\$35.43

Wren Nest Box (Mounting)



\$18.65

Wren Nest Box (Hanging)



\$18.65

Marking Paint



\$6.53

Available Colors

**Blue
White
Orange
Yellow**

New
Plat Book—2022
\$27.97



Marking Flags—\$13.99

Pink



Orange



Also Available Full-County Landowner Wall Maps - \$46.62

Muskingum SWCD Shop Order Form

Name

Address

City

State

Zip

Phone

Email

I would like to order the following:

#5 Bird Feeder w/suet	\$42.89	QTY		=	
#5 Bird Feeder w/o Suet	\$37.30	QTY		=	
Thistle Feeder	\$41.96	QTY		=	
Sunflower Feeder	\$25.17	QTY		=	
Bluebird Nest Box	\$22.38	QTY		=	
Slanted Blue Bird Box	\$35.43	QTY		=	
Wren Nest Box	\$18.65	QTY		=	
Hanging Wren Nest Box	\$18.65	QTY		=	
Wood Duck Box	\$72.73	QTY		=	
3 Chamber Bat Box	\$47.55	QTY		=	
Marking Paint-Blue	\$6.53	QTY		=	
Marking Paint-White	\$6.53	QTY		=	
Marking Paint-Orange	\$6.53	QTY		=	
Marking Paint-Yellow	\$5.53	QTY		=	
Marking Flags-Orange	\$13.99	QTY		=	
Marking Flags-Pink	\$13.99	QTY		=	
Plat Book	\$27.97	QTY		=	
Plat Book with Shipping	\$32.97	QTY		=	
		Sub Total		=	
		7.25% Tax		=	
		Total		=	

Make Check Payable To:

Muskingum SWCD

225 Underwood Street, Suite 100

Zanesville, OH 43701

Phone: (740) 454-2027

You will be notified by phone or email when your order can be picked up.

Curbside pickup available upon request

Order must be picked up at the District Office.

Items can also be purchased online at www.muskingumswcd.org with credit card. There is a 4% service fee.



2022 FISH SALE



TUESDAY, MAY 10, 2022

PICK-UP HOURS: 12:00 PM–1:30 PM

IN THE MSWCD PARKING LOT (ELBERON STREET SIDE)

PLEASE BRING WITH YOU WHEN YOU PICK UP YOUR FISH:

1. CONTAINER: (5-GALLON BUCKET OR 10-20 GALLON TRASH CAN)
2. PLASTIC LINER IN CONTAINER
3. LINER HALF FULL OF POND WATER.



MUSKINGUM SOIL AND WATER CONSERVATION DISTRICT



2022 FISH SALE ORDER FORM

ORDER DEADLINE: APRIL 29, 2022

NAME _____ E-MAIL _____

ADDRESS _____ CITY _____ ZIP _____

PHONE # _____

CELL # _____

MAKE CHECKS PAYABLE TO:
MUSKINGUM SOIL AND WATER
CONSERVATION DISTRICT
225 UNDERWOOD ST., STE. 100
ZANESVILLE, OHIO 43701

PAYMENT MUST BE MADE AT THE TIME OF ORDERING THE FISH. TO ORDER, CLIP THE ORDER FORM IN THIS FLYER AND MAIL IT ALONG WITH PAYMENT TO MSWCD OFFICE. ADDITIONAL ORDER FORMS AVAILABLE AT WWW.MUSKINGUMSWCD.ORG.

FISH CAN ALSO BE ORDERED ONLINE AT OUR WEBSITE AND PURCHASED WITH CREDIT CARD. THERE IS A 4.0% SERVICE CHARGE FOR CREDIT CARD PURCHASES.

PLEASE DO NOT CALL FENDER'S FISH HATCHERY DIRECTLY. ORDERS WILL NOT BE ACCEPTED AFTER DEADLINE DATE. ALL FISH MUST BE PRE-ORDERED!

FISH SPECIES	QTY.	COST EACH	TOTAL
LARGEMOUTH BASS		\$1.21	\$
BLUEGILL		\$1.12	\$
CHANNEL CATFISH		\$1.07	\$
HYBRID BLUEGILL		\$1.12	\$
RED EAR SHELLCRACKER		\$1.12	\$
FATHEAD MINNOWS		\$8.39/ 100	\$
JAPANESE KOI		\$12.12	\$
WHITE AMUR		\$13.99	\$
POND CONDITIONER 1 GAL		\$88.58	\$
POND MANAGEMENT BOOK		\$18.65	\$

ORDER TOTAL \$ _____

7.25% TAX \$ _____

GRAND TOTAL \$ _____

BLUEGILL 2-4" THEY ARE FOUND THROUGHOUT THE STATE IN NEARLY EVERY STREAM AND BODY OF WATER. BLUEGILL REACH 7 TO 10 INCHES, BUT IF THEY BECOME OVERCROWDED, WILL REMAIN LESS THEN 5 INCHES IN LENGTH. BEST FISH FOR FOR-AGE BECAUSE OF THEIR HIGH REPRODUCTION NUMBERS.	\$1.12 EACH	JAPANESE KOI JAPANESE KOI LOVE TO EAT DUCKWEED SO IF YOU REDUCE THE AMOUNT OF FOOD YOU GIVE THEM IT WILL ENCOURAGE THEM TO EAT THE DUCKWEED.	\$12.12 EACH
CHANNEL CATFISH 4-5" FOUND IN MOST LARGE STREAMS, LAKES AND MANY FARM PONDS, THIS OHIO NATIVE CAN TOLERATE A WIDE RANGE OF CONDITIONS, BUT PREFERS AREAS OF DEEP WATER, AND A LOW TO MODERATE CURRENT. THE AVERAGE SIZE CATFISH IS 12 TO 14 INCHES IN LENGTH.	\$1.07 EACH	LARGEMOUTH BASS 2-3" NATIVE TO OHIO, LARGEMOUTH BASS PREFER PONDS, LAKES AND SLOW, SLUGGISH STREAMS. ADULT BASS EAT CRAYFISH, FROGS, LARGE INSECTS AND OTHER FISH. AVERAGE SIZE WEIGHS FROM 1 TO 2 POUNDS.	\$1.21 EACH
FATHEAD MINNOWS 1-2" MINNOWS ARE A FEEDER FISH THAT TOLERATE A WIDE RANGE OF WATER CONDITIONS, MAKING THEM SUITABLE FOR FARM PONDS. RECOMMENDED IN NEW PONDS TO HELP BOOST GROWTH OF GAME FISH UNTIL BLUEGILL BEGIN TO SPAWN.	\$8.39/ 100	REDEAR SHELLCRACKER 2-4" REDEAR ARE NOT NATIVE TO OHIO, BUT HAVE BEEN STOCKED IN STATE WATERS FOR MANY YEARS. THEY PREFER A DIET OF SNAILS AND CAN REACH 9 TO 11 INCHES IN LENGTH.	\$1.12 EACH
HYBRID BLUEGILL 2-4" A CROSS OF A MALE BLUEGILL AND FEMALE GREEN SUNFISH, GIVING IT THE LENGTH OF BLUEGILL AND THICKNESS AND AGGRESSIVENESS OF SUNFISH. IF THE FOOD IS THERE, THEY REACH THE SIZE OF 10 TO 11 INCHES AND CAN WEIGH UP TO 1 TO 1.5 POUNDS.	\$1.12 EACH	WHITE AMUR 8-10" ALSO KNOWN AS GRASS CARP, THEY EAT WEEDS AND PLANTS AND GROW VERY RAPIDLY. WHITE AMUR OFTEN ATTAIN 4 FEET IN LENGTH AND WEIGH 70-90 POUNDS AS ADULTS. AMUR USED FOR WEED CONTROL ARE STERILE, TRIPLOID FISH THAT EAT UP TO THREE TIMES THEIR OWN BODY WEIGHT.	\$13.99 EACH
POND MANAGEMENT BOOK THIS BOOK IS FOR THE SMALL POND OR BIG LAKE OWNER TO USE AS A GUIDE TO STOCK AND PROPERLY MANAGE THEIR PONDS AND/OR LAKES.	\$18.65	NATURE'S POND CONDITIONER NATURE'S POND CONDITIONER BY KOENDERS IS A TWO IN ONE BOTTLE PRODUCT. YOU CAN PREVENT THE BLACK MUCK FROM CAUSING HIGH FERTILITY RATES AND GROWING VEGETATION, AND PREVENT FISH KILLS WHILE KEEPING YOUR POND HEALTHY. MORE INFORMATION AT HTTP://FENDERSFISHHATCHERY.COM/	\$88.58 GAL

STOCKING RECOMMENDATIONS FOR A NEW ONE ACRE POND

THESE TWO MAKE YOUR BALANCE:

100 LARGEMOUTH BASS
200 BLUEGILL

THESE ADD VARIETY TO THE MENU:

100 CHANNEL CATFISH
100 REDEAR SHELLCRACKER
100 HYBRID BLUEGILL
1000 FLATHEAD MINNOWS
*10 WHITE AMUR

NOTE: IF THE POND YOU ARE STOCKING IS SMALLER THAN ONE ACRE, MULTIPLY THE SURFACE AREA OF THE POND BY THE RATE IN THE CHART TO THE LEFT.

FOR EXAMPLE: 0.65 ACRE POND
0.65 X 1000 (MINNOWS) = 650 MINNOWS

*SUGGESTED RATE FOR ONE ACRE POND WITH MODERATE POND WEED PROBLEM. NEW PONDS SHOULD NOT BE STOCKED UNLESS POND WEEDS EXIST (MODERATE = 50% INFESTATION).

2022 BIG TREE NOMINATION CONTEST

For a number of years now, the MSWCD has sponsored a Big Tree Contest in Muskingum County. The purpose of the contest, in addition to locating, measuring and documenting our county's big trees, is to provide an opportunity to remind us of the importance of trees and their role in our quality of life.

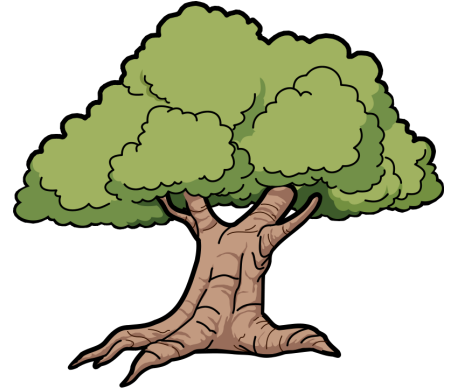
Trees nominated for this contest may be on your own property, or on other privately owned or public land in Muskingum County. Trees are scored using a format utilized by the Ohio Department of Natural Resources-Division of Forestry in determining Ohio's big trees, many of which remain National Big Tree Champions. The tree's height, average crown spread, and Diameter at Breast Height (DBH) are factored in this measurement, earning specific points or values.

When you nominate a tree, we ask that you approximate these dimensions. SWCD staff will measure each nominated tree for points. Also, it is very important to be specific as to the location of the nominated tree. It is equally important that the nominator or owner be available for the measurement by the staff during the field visit.

An award will be presented to the owner of the largest tree in Muskingum County, regardless of species. A custom made plaque and recognition in the District Newsletter will be awarded to the owners of the "Big Tree 2022".

Last year, a Red Oak owned by Wilbur and Betty Rambo, scored 292.75 points. This points total was calculated by adding the circumference in inches (169 inches or 4.48 feet in diameter), the height (115 feet) and the crown spread average times .25 (35 ft x .25).

Each tree entered is in the contest for two years. Previous big tree winners can enter again, but a different tree must be submitted for consideration. If you would like to submit a tree for consideration, complete the form below and return by May 27, 2022. Additional entry forms can be found on our website.



2022 MUSKINGUM COUNTY "BIG TREE" CONTEST OFFICIAL ENTRY FORM

Owner's Name: _____
Address: _____
City, State, Zip: _____
Daytime Phone: _____
Nominator's Name: _____
Daytime Phone: _____
Species: _____
Circumference at 4 1/2' (in inches): _____
Approx. Vertical Height (in feet): _____
Average Diameter/Spread of Crown (in feet): _____
Exact Location of Tree: _____

Draw a brief sketch of the property showing the approximate location of the tree in the space provided below, or stop into the office and show us on an aerial map.

Complete and return by May 27, 2022 to:
Muskingum SWCD "Big Tree" Contest
225 Underwood Street, Suite 100
Zanesville, OH 43701

Urban Greens

A program of Muskingum Soil & Water Conservation District

Urban Greens is Growing!

Urban Greens has expanded by three sites for the 2022 season! Our sites now include Restoration Park, Brighton Grows, Zanesville Community High School, with the addition of Imlay's Zanesville Community Garden, Marshall Greens, and Philo High School. We have partnered with the South Zanesville Food Pantry to grow food to the specific wants and needs of those who utilize this pantry. We will be providing educational programming throughout the spring and summer on how to prepare the produce they are receiving, as well as information on how to start personal gardens. We have gathered an amazing group of volunteers with a variety of skills who are eager to participate in the success of the community gardens this season! But more volunteers are welcome!



Upcoming Events 2022

All Events Are Free!

NOW	Restoration Park Registration is open NOW for anyone interested in having a raised bed. Everyone interested in having a bed must fill out the registration form that is available on our website or in the office. A new registration for 2022 must be filled out by those who have reserved beds in the past.
April 13 6:00 PM	Let's Get Started topics will be land assessment, soil health, and bed preparation, plant variety selection and seed starting at Restoration Park Community Garden.
April 21 5:30 PM–6:30 PM	Meet and Greet Event James D. Singer Activity Center—for residents in Coopermill Manor and around the Brighton Grows Community Garden to share their ideas for the site with Urban Greens Representatives. Central State University “Fast Track to Farming” information will be available.
April 30 10:00 AM–12:00 PM	Meet and Greet Event Brighton Grows Community Garden—for residents in Coopermill Manor and around the Brighton Grows Community Garden to share their ideas for the site with Urban Greens Representatives. Central State University “Fast Track to Farming” information will be available.
May 5 6:00 PM	Central State University “Fast Track to Farming” Informational Meeting - Rural Service Building, 225 Underwood Street, Zanesville.
May 18 6:00 PM	It's in the Ground . . . Now What? topics will be spring weed and pest management—Brighton Grows Garden.
June 8 6:00 PM	Taming the Garden topics will be summer bed preparation, planting and crop maintenance (pruning and trellising) - Marshall Greens Garden.
July 6 6:00 PM	Beating the Weeds and Pests topics will be summer weeds and pest management— Imlay Garden.
August 10 6:00 PM	Setting up for Fall topics will be fall crops, weeds and pest management in the fall — Zanesville Community High School.



Manure Smells like Money!



Are you getting ready to clean out the beef cattle barn this Spring? Spread properly, that bedded pack manure could smell pretty sweet as a great source of “free” fertilizer for your crop, hay and pasture fields. Beef manure is not only a great source of Nitrogen, Phosphorous and Potassium, but it is also full of other micronutrients that healthy crops need, such as Sulfur, Magnesium, and Calcium. It also contains tons of microbes that will work to improve your overall soil health.

To know the exact fertilizer value of manure, you need to take a sample and send it to a lab to be analyzed. For more information about labs that do manure testing, please call our office. Without actual manure test results, per Glen Arnold, OSU Extension Field Specialist for Manure Application Management, generally speaking one ton of beef bedded pack manure is a rough equivalent to 100 lbs. of 12-12-12 fertilizer. Ideally, you would apply the manure according to current soil test results for each field and the planned crops. Soil test results are good for three years. Soil test kits can be obtained at the OSU Extension Office in the Rural Services Building.

On a typical field, normal manure application rates usually fall between 5,000 lbs to 8,000 lbs. manure per acre. So how do you know how many tons you are applying? An easy way to roughly figure this is by the “Tarp Method”. Get a tarp or a piece of heavy duty plastic that measures exactly 56” wide by 56” long. Weigh the tarp to determine its empty weight. Next, spread the tarp out in the field on which you will spread the manure. Drive over the tarp at your normal spreading speed. Then pick up the tarp with all of the manure it caught and weigh it. Subtract the weight of the empty tarp from the weight of the full tarp. The difference in pounds is the approximate rate in tons/acre of manure that you spread. For example, if the tarp with the manure weighed 7 lbs. and the empty tarp weighed 2 lbs., then the manure weighed 5 lbs. and would be roughly equivalent to a spreading rate of 5 tons of manure/acre.

Manure or fertilizer should not be spread if offsite loss is likely. This precludes broadcast applications on fallow fields that are either frozen or snow-covered, when the top two inches of soil are saturated, and when there is a greater than 50% chance of rainfall of more than ½ inch within 24 hours. Spring is usually the best time to spread manure to time it with crop growth. On hayfields, you can also spread manure between cuttings if you wait at least 30 days between the application and the next hay harvest. Keep good records of when, where, and how much manure was spread. Also remember to be conscious of your neighbors’ upcoming holiday picnics and outdoor graduation ceremonies. See the chart below for the minimum set back distances that you should follow when spreading manure. With the rising fertilizer prices in 2022, spreading manure never smelled so good!

3.2. Manure Application Setback Distances

Minimum Setback Distances for the Application of Manure and Other Organic By Products ^{5 & 6}

Type of Sensitive - Setback Area	Setbacks Based on Methods of Manure Application		
	Surface Application	Emergency Winter Application Frozen or Snow Covered Soils ⁷	Surface Incorporation W/1 24 Hours OR Direct Injection
Residences / Private Wells down slope from the application area.	100 ft.	200 ft.	100 ft.
Sinkholes	300 ft.	300 ft.	100 ft.
Pond or Lake	35ft. Vegetative Barrier ¹ , with the remaining 100 ft. setback in non-vegetative Setback ²	35ft. Vegetative Barrier ¹ , with the remaining 200 ft. setback in non-vegetative Setback ²	35ft. Vegetative Barrier ¹
Streams	35ft. Vegetative Barrier ¹ , OR	200 ft.	None
Ditches	100 ft. setback in non-vegetative Setback		
Surface Inlets	OR 35 ft. in non-vegetative setback ³		
Grassed Waterway	35 ft.	200 ft.	None
Field Surface Drains	35 ft. ⁴	200 ft.	None
Public Wells	300 ft.	300 ft.	100 ft.
Developed Springs	300 ft. upslope	300 ft. upslope	300 ft. upslope
Public Surface Drinking Water Intake	300 ft.	300 ft.	300 ft.

1 Permanent vegetation consisting of grass, grass/legume mix, trees/shrubs, or trees/shrubs and grass/legumes. Measured from top of bank.

2 Includes 100 ft. total setback. The setback must include a minimum of 35 ft. of vegetative cover from top of bank with the remainder of the 100 feet with no vegetative requirement. The setback is measured from the top of bank.

3 Applies if the manure application area has at least 50% vegetation/residue cover at the time of application.

4 No setback required for field surface drains if the Additional Criteria to Protect Water Quality, Item 5 is applied from this standard.

5 CAFO's must follow the setbacks defined in the Ohio Department of Agriculture (ODA) rules regarding manure application. See Table 5 – ODA Setbacks - Appendix A Table 1 of rule 901:10-1-14: Land Application Restrictions and Setbacks

6 Excludes sludge that is regulated by the Ohio Environmental Protection Agency (OEPA) and septage regulated by the Ohio Department of Health.

7 See Additional Criteria to Protect Water Quality, Item 7, for the special emergency manure application criteria on frozen and snow covered fields.

KID'S CAMP



HERE'S WHAT YOU NEED TO KNOW!

- No fee.
- Registration required and will open in May.
- Opened to children ages 6-12; younger siblings are welcomed but must be accompanied by an adult.
- Information will be coming out closer to the dates, so check out our website at www.muskingumswcd.org.

DATE	TIME	PLACE
June 11	9AM–12PM	Inlay Community Garden
June 22	9AM–12PM	Brighton Grows Community Garden
July 20	9AM–12PM	Restoration Park Community Garden

TEEN VOLUNTEERS NEEDED TO HELP WITH CAMP.

We are so excited to be able to meet again in person!

“Don't Throw That Away” Craft Night

Come join us for an evening of fun, laughs, and making something new again. We are getting together again for a recycled/repurposed craft event. This event will be held each quarter starting Tuesday, April 26, 2022 at the Rural Service Building meeting room, 225 Underwood Street, Zanesville. We will start at 6:00 p.m. and end at 7:00 p.m. Space is limited, and registration is required. To register, visit our website at www.muskingumswcd.org or call the office at 740-454-2027. There is no cost for this event. Future events may have a cost, because it will depend on what we are making new again. Join us in April to make seed bombs.

Mark Your Calendar for Future Dates
Tuesday, July 26, 2022
Tuesday, September 27, 2022

If you have any of these items that you are wanting to throw away, STOP, we need them.

Box Cheese Graters
 Used Canning Jar Lids and Rings
 Wine Bottle Corks

Drop them off at the office Mon.–Fri. 8AM–4PM.

Thinking of Growing and Selling Food?

Join us for a Fast Track Farming Program Information Session



Interested in starting an urban farm? Want to resolve the food desert issues in your neighborhood? Are you already growing a vegetable garden and want to earn a few extra bucks? Join us for an information session about the Central State University 2022 Fast Track Farming program. Program participants will receive instruction and mentoring on urban production agriculture, entrepreneurship, marketing, and food safety. The program is free, but does involve a commitment.

Session One:

Date: Thursday, April 21, 2022
 Time: 5:30–6:30 p.m.
 Place: James D. Singer Activity Center (Coopermill Manor)
 831 Mathews Street, Zanesville, Ohio

Session Two:

Date: Saturday, April 30, 2022
 Time: 10:00 a.m.—12:00 p.m.
 Place: Brighton Grows Community Garden
 Corner of Cliffwood Avenue and Baker Street

Contact:

Allie Murphy, 740-454-2072 or
 Denise Natoli Brooks at dbrooks@centralstate.edu
 Pre-registration encouraged but not required.
 Pre-register at www.muskingumswcd.org



EXTENSION
 1890 LAND-GRANT INSTITUTION



Muskingum Soil and Water
 Conservation District

Muskingum Soil and Water Conservation District is a equal opportunity employer.



Want to help protect your pollinators?

Our annual plant sale will begin in late spring/early summer. All plants are native and will encourage the health and population for our pollinators.

Stay tuned and follow us on all social media platforms and be sure to subscribe to our website, www.muskingumswcd.org.



MUSKINGUM SOIL AND WATER CONSERVATION DISTRICT

225 UNDERWOOD STREET, SUITE 100
ZANESVILLE, OH 43701

Return Service Requested

BOARD OF SUPERVISORS:

LANCE DEAL, CHAIRPERSON
DOUG MCCONNELL, VICE-CHAIRPERSON
MARK WEISER, TREASURER/FISCAL AGENT
BECKY VANSICKLE, SECRETARY
MARK STERLING, MEMBER

DISTRICT PERSONNEL:

ROBERT BOEHLE
LISA CROCK
MELISSA DEVORE
DOREEN MAURER
ALLIE MURPHY
VAN SLACK

NRCS PERSONNEL:

LORI RYAN-GRIFFIN
DEE WISEMAN

PRINTED ON RECYCLED PAPER



Save the Date

Ag Breakfast	April 5
MSWCD Board Meeting	April 12
Live at Noon	April 12
WHIZ AM 1240 Radio	April 19
Farming After Dark	April 20
Live at Noon	April 26
Conservation Craft Night	April 26
Ag Breakfast	May 3
MSWCD Board Meeting	May 10
Live at Noon	May 10
Fish Sale Pick Up	May 10
WHIZ AM 1240 Radio	May 17

WHIZ AM 1240 Radio	May 17
Live At Noon	May 24
Farming After Dark	May 25
Office Closed	May 30
Live at Noon	May 30
Ag Breakfast	June 7
MSWCD Board Meeting	June 14
Live at Noon	June 14
Office Closed Juneteenth	June 20
WHIZ AM 1240 Radio	June 21
Farming After Dark	June 22
Live at Noon	June 28
Conservation Craft Night	July 26

